





威海市山花地毯集团有限公司 董事长 总经理 刘新惠
Weihai Shanhu Carpet Group Co., Ltd. Chairman & general manager Liu Xinhui

企业理念 Company Philosophy

为进一步提升企业，为客户创造更多价值，集团董事长刘新惠总结二十多年的管理经验，提出了以“一心一意”为客户服务为核心的“四心”、“四个一”的企业理念：

“四心”：用心 公心 责任心 进取心

“四个一”：一尘不染（安全环保）

一丝不苟（追求完美）

一心一意（全心全意为客户服务）

一呼百应（上下同心）

Based on over 20 years management experience, Chairman Liu Xinhui has created an Enterprise Culture within the group, in order to positively project the company's image, and maximize customer value through a commitment to consistently providing superior quality and service, and achieved through each employees' dedication, commitment, initiative and ready acceptance of personal responsibility.

-4 spirits: Dedication, Commitment, Responsibility, Initiative
and 4 prime elements

-Sustainability (Work Safety and Environmental Friend)

-Reliability (Responsibility and Excellence)

-Value for Customer (Fine Quality Service)

-Team-Work (Team Spirit)



中国500最具价值品牌
China's 500 Most Valuable Brands



中国地毯行业标志性品牌
The Most Worthy Carpet Brand in China



中国驰名商标
China Well-known Trademark



中国名牌
China Top Brand



山花 — 崛起的国际地毯品牌

山花地毯集团，一个引领中国地毯业由民族走向世界的领航者，以蓬勃的发展气势将“山花”打造成为世界衡量中国地毯业发展水平的标志性品牌。“山花”在中国地毯业唯一同时获得“中国驰名商标”、“中国名牌”、“中国500最具价值品牌”三项桂冠，被评价为“中国地毯行业第一品牌”、“中国地毯行业标志性品牌”。

建于1982年的山花地毯集团，目前是亚洲门类最全，具有强大营销、研发、生产实力的综合性专业地毯制造商，三大工业园区，四家中外合资企业和一座研发大楼占地800余亩，年综合生产能力达1800万平方米。2008年实现销售收入10.2亿元，出口创汇3678万美元，各项经济技术指标连续17年居中国同行业之首。

国际化的企业集团打造非凡的国际品质，山花集团获得ISO9001：2000质量体系、ISO14001：2004环保体系和GB/T28001：2001职业健康安全体系认证；中国首家美国CRI +PLUS室内空气质量和国际环保地毯认证，欧盟CE安全认证；中国首家新西兰羊毛局、英国羊毛协会、英威达尼龙地毯、首诺尼龙地毯和3M防污处理认证。

山花地毯以其优秀的品质不仅为人民大会堂万人大礼堂、人民大会堂中非合作论坛主会场、人民大会堂首次中美战略经济对话主会场、钓鱼台国宾馆、京西宾馆、拉萨火车站、上海APEC国际会议中心等中国最高端需求和北京2008奥运工程提供服务，而且为美国华盛顿肯尼迪艺术中心等世界艺术殿堂演绎经典地毯文化，同时大量销往欧美、日本、韩国、新加坡、澳大利亚及香港、台湾、澳门等国家和地区，在国际竞标中被香港国际机场及洲际、香格里拉、威斯汀、费尔蒙、文华、万豪、凯悦、喜来登、希尔顿、千禧等著名酒店广泛认知和采用。

An Introduction to Shanhua Carpet Group

Shanhua Carpet Group has been a leader in China's carpet industry since 1985. Our brand was crowned "China's Top Brand In Carpets" based on the certifications of "China Well-Known Trademark", "China Top brand", "China's 500 Most Valuable Brands", and "The Most Worthy Carpet Brand In China". Shanhua Group's rapid domestic expansion has prepared our company well to be an international carpet brand.

Established in 1982, Shanhua Carpet Group has developed a very comprehensive range of carpet manufacturing, including four joint venture companies, with a capacity of 18 million square

meters. We are still growing rapidly. Our total sales volume of RMB 1.02 billion in fiscal 2008 has been the NO.1 position in the last 17 consecutive years in China carpet industry.

As an international manufacturer, Shanhua cooperates with the New Zealand Wool Board, the British Wool Marketing Board, Invista, Solutia, and 3M to make certificated ISO9001, ISO14001 and GB/T 28001 internationally standardized products.



With our sustained fine quality and CRI + Plus, CE certifications, Shanhua Carpet Group has installed carpets in prestigious venues such

as China's Great Hall of the People, the Beijing Jingxi Hotel, many Beijing 2008 Olympic Projects, The Kennedy Center for the Performing Arts in Washington DC, and international brand hotels including Intercontinental, Shangri-La, Sheraton, Hilton, Westin, Marriott, Fairmont, Millennium Copthorne, Jinjiang, Jianguo, and the Hong Kong International Airport terminal building.





山花地毯
SHANHUA CARPET





国家重点工程

China Central Government Projects

山花地毯广泛应用于国家重点工程，见证了中华民族无数重大历史时刻。

Shanhua Carpets have borne witness to many historic moments in various Central Chinese Government installations.



国家体育场“鸟巢”贵宾接待室
National Stadium VIP Reception Room



人民大会堂万人大礼堂
The Great Hall of the People



中非合作论坛主会场
The main Hall in China-Africa Cooperation



拉萨火车站
Lasa Railway Station



南京奥体中心 胡锦涛总书记“十运会”贵宾接待室
Nanjing Olympic Center General Secretary Hu Jintao VIP Reception Room "the 10th National Sports Meeting"



首次中美战略经济对话主会场
The main Hall in the First China-U.S. Strategic Economic Dialogue

人民大会堂万人大礼堂
The Great Hall of the People

中非合作论坛主会场
The main Hall in China-Africa Cooperation

首次中美战略经济对话主会场
The main Hall in the First China-U.S. Strategic Economic Dialogue

钓鱼台国宾馆
Diaoyutai State Guesthouse

中央军委八一大楼
China Military Committee Building

南京奥体中心
Nanjing Olympic Center

拉萨火车站
Lasa Railway Station

国家体育场
National Stadium

国家体育馆
National Indoor Stadium

北京射击馆
Beijing Shooting Range Hall

老山自行车场馆群
Laoshan Velodrome

北京大学体育馆
Peking University Gymnasium

北京科技大学场馆
Beijing Science and Technology University Gymnasium

北京工业大学体育馆
Beijing University of Technology Gymnasium

北京工人体育场
Beijing Workers' Stadium

工人体育馆
Beijing Workers' Gymnasium

首都体育馆
Capital Indoor Stadium

北京航空航天大学体育馆
Beijing University of Aeronautics & Astronautics Gymnasium

国家会议中心击剑馆
Fencing Hall of National Convention Center

北京奥林匹克公园网球场网球中心
Beijing Olympic Green Tennis Court

青岛奥林匹克帆船中心
Qingdao Olympic Sailing Center

.....



北京中国大饭店 白金五星级
China World Hotel Platinum Five-star Level



国际品牌酒店 Internationally Renowned Hotels

山花，专业打造高档酒店地毯。

山花作为国际认可的专业地毯制造商，其丰富多彩的品种，国际水准的服务体系，全力为每个酒店空间创造独特的风格。在国际竞标中，山花被洲际、香格里拉、威斯汀、费尔蒙、文华、万豪、丽思卡尔顿、凯悦、喜来登、希尔顿、千禧等著名酒店广泛认知和采用。

Shanhua – makers of fine commercial carpets for Hotels

Shanhua commercial graded carpets are internationally renowned because of the comprehensive range of styles offered, the inherently consistent carpet quality and superior supporting services. Shanhua carpets are installed in various hotels throughout the Intercontinental, Hyatt, Shangri-La, Sheraton, Hilton, Westin, Fairmont, Marriott, Millennium, Ritz-Carlton, and Jianguo hotel groups.



北京丽晶大酒店 五星级
The Regent Beijing Five-star Level



上海波特曼丽嘉酒店 白金五星级
Portman Ritz-Carlton, Shanghai Platinum five-star Level



上海豫园万丽酒店 五星级
Renaissance Shanghai Yuyuan Hotel Five-star Level



广州富力丽思卡尔顿酒店 五星级
The Ritz-Carlton, Guangzhou Five-star Level



上海千禧海鸥大酒店 五星级
Millennium Hongqiao Hotel Shanghai Five-star Level



广州中国大酒店 五星级
Marriott China Hotel Guangzhou Five-star Level

中国大饭店
China World Hotel

重庆洲际酒店
Chongqing InterContinental Hotel

青岛海尔洲际酒店
Qingdao InterContinental Hotel

惠州洲际温泉度假酒店
Intercontinental Huizhou Resort

香港天际万豪酒店
HongKong Sky City Marriott Hotel

北京丽晶大酒店
The Regent Beijing

北京千禧大酒店
Grand Millennium Beijing

上海千禧海鸥大酒店
Millennium Hongqiao Hotel Shanghai

北京金融街威斯汀酒店
The Westin Beijing Financial Street

上海外滩中心威斯汀大饭店
The Westin Bund Center Shanghai

北京金茂威斯汀大酒店
Beijing Jinmao Westin Hotel

北京柏悦酒店
Beijing Park Hyatt Hotel

北京华贸中心JW万豪酒店
Beijing JW Marriott Hotel

北京荷华万豪酒店
Beijing Marriott Hotel City Wall

宁波JW万豪酒店
JW Marriott Hotel, Ningbo

上海豫园万丽酒店
Renaissance Shanghai Yuyuan Hotel

北京东方君悦大酒店
Grand Hyatt Beijing

广州富力君悦酒店
Hyatt Guangzhou

沈阳君悦精品酒店
Hyatt Boutique Hotel Shenyang

广州富力丽思卡尔顿酒店
The Ritz-Carlton, Guangzhou

北京丽思卡尔顿酒店
The Ritz-Carlton, Beijing

金茂三亚丽思卡尔顿酒店
The Ritz-Carlton, Sanya

广州中国大酒店
Marriott China Hotel Guangzhou

台山碧桂园凤凰酒店
Taishan Country Garden Phoenix Hotel

北京香格里拉大酒店
Shangri-La Hotel, Beijing

温州香格里拉大酒店
Shangri-La Hotel, Wenzhou

宁波香格里拉大酒店
Shangri-La Hotel, Ningbo

满洲里香格里拉大酒店
Shangri-La Hotel, Manzhouli

澳门希尔顿大酒店
Macao Hilton Hotel

上海静安希尔顿大酒店
Shanghai Jing An Hilton Hotel

宁波大榭国际大酒店
Ningbo Daxie International Hotel

宁波远洲大酒店
Smile and Nature Hotel, Ningbo

长沙运达喜来登酒店
Sheraton Changsha Hotel

九寨沟喜来登国际大酒店
Sheraton Jiuzhaigou International Hotel

天府丽都喜来登饭店
Sheraton Chengdu Lido Hotel

广州东圃福朋喜来登酒店
Sheraton Guangzhou, Dong Pu

上海波特曼丽嘉酒店
Portman Ritz-Carlton, Shanghai

澳门新葡京酒店
Grand Lisboa, Macau

.....



香港国际机场
Hong Kong International Airport



交通运输工程 Airports and Transportation Hubs

无论是现代国际空港、火车站，还是豪华游艇、飞机、火车，山花地毯都全力打造高效、现代的交通运输工程。

Shanhua carpets provide a durable user friendly floorcovering solution for Airports, railway stations and passenger terminals, Airplanes, Trains and Cruises.



大连国际机场
Dalian International Airport



广州新白云国际机场
Guangzhou New Baiyun International Airport



五星级豪华游轮“东方皇帝号”
The Five-Star Barge“East King”

北京首都机场
Beijing Capital Airport

香港国际机场
Hong Kong International Airport

广州新白云国际机场
Guangzhou New Baiyun International Airport

大连国际机场
Dalian International Airport

青岛国际机场
Qingdao International Airport

杭州萧山国际机场
Hangzhou Xiaoshan Airport

拉萨火车站
Lasa Railway Station

五星级豪华游轮“东方皇帝号”
The Five-Star Barge“East King”

.....



写字楼 Office Buildings

Shanhua's comprehensive range enables architects and specifiers to choose floor coverings according to specific end use requirements.

自由·创造·精彩空间
Freedom·Creating·Space





中国国际贸易中心
China World Trade Center

新保利大厦

奥运媒体村

北京电视中心

国家图书馆

国航业务综合楼

中国移动通信集团办公大楼

诺基亚(中国)投资有限公司

中国铁通有限公司

中国网通集团有限公司河北省分公司

北航科技楼

北京建工集团

中国建筑总公司

中国机械工业第三安装工程公司

中国人民武装警察消防部队

广东省第二建筑工程公司南方电力调度通信大楼

中国第一冶金建设有限公司

武商集团办公楼

中国石化集团洛阳石油化工工程公司

江汉石油管理局

汇丰银行(中国)有限公司

中国农业银行河南省分行郑东大厦

中国工商银行股份有限公司软件开发中心

中国建设银行天津分行河北区支行

招商银行

杭州民生银行

交通银行武汉分行办公楼

宁波银行

中国银行浙江省分行

中华人民共和国杭州海关

南方电力调度通信大楼

福建电力有限公司

安徽省电力公司

华能国际电力股份有限公司

山东广电中心大厦

福建电力大楼

云南省政协办公大楼

宁夏自治区党委办公室

海宁市政府

江苏省扬中市行政中心

河南省政府

黄浦海关保税区新办公楼

.....





家用
Homes

舒适 环保 独特的手工艺 领先技术

Comfortable Environment-friendly Unique handicraft State-of-the-art technology



完善的生产配套能力，
为您提供丰富多彩的地毯产品。

Shanhua makes it easy to choose the best
carpet for your needs.

山花是亚洲目前门类最齐全的专业地毯制造商，其完善的
配套和丰富多彩的地毯品种，有助于每个空间创造独特的
风格。选择山花，让您的选择更轻松。

- 单面威尔顿地毯
- 阿克明斯特地毯
- 威尔顿地毯
- 方块地毯
- 簇绒地毯
- 彩印地毯
- 手织地毯
- 汽车地毯

Shanhua offers the most comprehensive soft floorcovering
range in Asia. In order to satisfy your particular requirement,
you can choose from

- Wire Wilton Carpet
- Axminster Carpet
- Wilton Carpet
- Carpet Tiles
- Tufted Carpet
- Printed Carpet
- Hand-tufted Carpet
- Car Mats





完善的配套能力保证了每一个生产环节上的产品品质。

Completed integration production guarantees the quality in every stage.



羊毛纱线生产线

Wool Yarns Product Lines



优质的进口羊毛
High Quality Import Wool



纺纱机生产线
Spinning Product Lines

■ 尼龙、丙纶纱线生产线
Nylon and PP Yarns Product Lines



BCF长丝生产线
BCF Yarns Product Lines



倍捻生产线
Twist Product Lines



热定型生产线
Heat-setting Product Lines



BCF长丝
BCF Yarns



阿克斯明斯特地毯 Axminster Carpet

山花阿克斯明斯特地毯毯面平整、丰满，风格富丽堂皇，达到国际商业重量级地毯标准。具有卓越的外观保持性、耐用性、稳定性、舒适性，经久耐用，适用于酒店餐厅、走道、宴会厅、酒吧、会议室等公共场所。

The plush surface and elegant style of Shanhua's Axminster range meets advanced international carpet standards. It also has excellent appearance retention, durability, dimensional stability and underfoot comfort. Axminster is the most suitable for hotel restaurants, corridors, banquet, meeting room and other public areas.



电脑阿克斯明斯特编织提花地毯织机
Axminster loom with an electronic jacquard



阿克斯明斯特生产线
Axminster Backing Lines



单面威尔顿地毯 Wire Wilton Carpet

山花单面威尔顿地毯倾力打造色彩和谐，温馨典雅的环境。毯面结构紧密，具有良好的绒头牢度、外观保持力、精致的图案装饰能力，为酒店高档客房、豪华套房等场所提供最完美的铺地方案。

Shanhua Wire Wilton carpet is usually used in hotel guest rooms, luxury suites and apartments to create a restful, harmonious environment. Wire Wilton carpet features excellent surface durability, appearance retention and precise design and colour definition.

威尔顿地毯 Wilton Carpet

山花威尔顿地毯具有天鹅绒般的毯面效果，色彩和谐，温馨典雅。具有良好的绒头牢度、外观保持力、清晰的图案装饰能力，适宜制作家用块毯和酒店、公寓之客房毯。

Shanhua Wilton carpet features a velvet surface, harmonious colors and an elegant appearance. It has excellent durability, pile holding and appearance qualities, together with clear defined design and decoration. Wilton carpet is suitable for residential rugs, hotel guestrooms, suites and apartments.



威尔顿电脑提花织机
Wilton looms with electronic jacquard



簇绒地毯 Tufted Carpet

山花簇绒地毯图案现代感强，色彩典雅，品种丰富，绒头丰满，特别是多绒高、高割低圈、浮雕式圈绒提花等品种，是簇绒地毯的潮流的代表者。适用于会议室、公寓、酒店客房等场所。

Shanhua tufted carpet incorporate modern designs, elegant colors, and different styles such as plush pile, multi-levels, high cut /low loop and relief Jacquard. Tufted carpet is suitable for meeting rooms, apartments, hotel guest rooms and suites.



双层纱架
Double Deck Creel



簇绒地毯生产线
Tufted Carpet Product Lines



簇绒地毯织机
Tufted Carpet Machine



剪毛机
Shearing machine



织机前台操作
Loom foregrounding



织机后台操作
Loom Background Operation



方块地毯生产线
Carpet Tiles Backing Lines

方块地毯 Carpet Tiles

山花方块地毯集美观、实用、灵活于一体，为客户提供了较大的创意空间。具有阻燃、耐用、抗静电等优良品质和优异的尺寸稳定性和外观保持性。运输、搬运、安装、调换方便，适用于候机厅、写字楼、商场、图书馆、会议室、会展中心、医院等场所。

Featuring an attractive appearance, practicality and installation flexibility, Shanhua Carpet Tiles provide customers with considerable scope for creativity. Other significant features include fire retardance, durability, anti static performance, plus size and dimensional stability. Shanhua Carpet Tiles are especially suitable for airports, offices, shopping centers, libraries, conference rooms, convention centers and hospitals.



严格的生产控制
Strict Produce Control



精密的控制仪表
Exact Control Meter



彩印地毯 Printed Carpet

山花电子彩印地毯应用具有国际领先水平的16色电子彩印技术，图案层次丰富，色彩鲜艳，细节尽现，能最大限度地满足客户对个性化图案的需求。供货及时，可满足500平方米小批量订货。

Shanhua's Chromo Jet carpet printer is equipped with the most modern 16 color option electronic printed technology, capable of reproducing rich colours and detailed designs, and meeting individual customer requirements. Shanhua's production efficiency and flexibility enables fine quality carpets to be made in as little as a 500 lineal metre run.



先进的生产线
Advanced Product Lines

丰富的色彩系统
Abundant Color System

手织地毯 Hand-tufted Carpet

山花手织地毯图案丰富，品质上乘。从简约、现代到华丽、古典，处处体现着品质与艺术的完美结合，是豪华家饰、贵宾厅、高档会议室的铺地佳品。

Shanhua's splendid Hand-tufted carpet incorporate fine quality and rich designs ranging from modern to classical styles and combine quality and art. They are suitable for luxury decoration, VIP and high class meeting rooms.



手织地毯生产线
Hand-tufted Carpet Product Lines



织作
Hand Tufted



投沟
carve



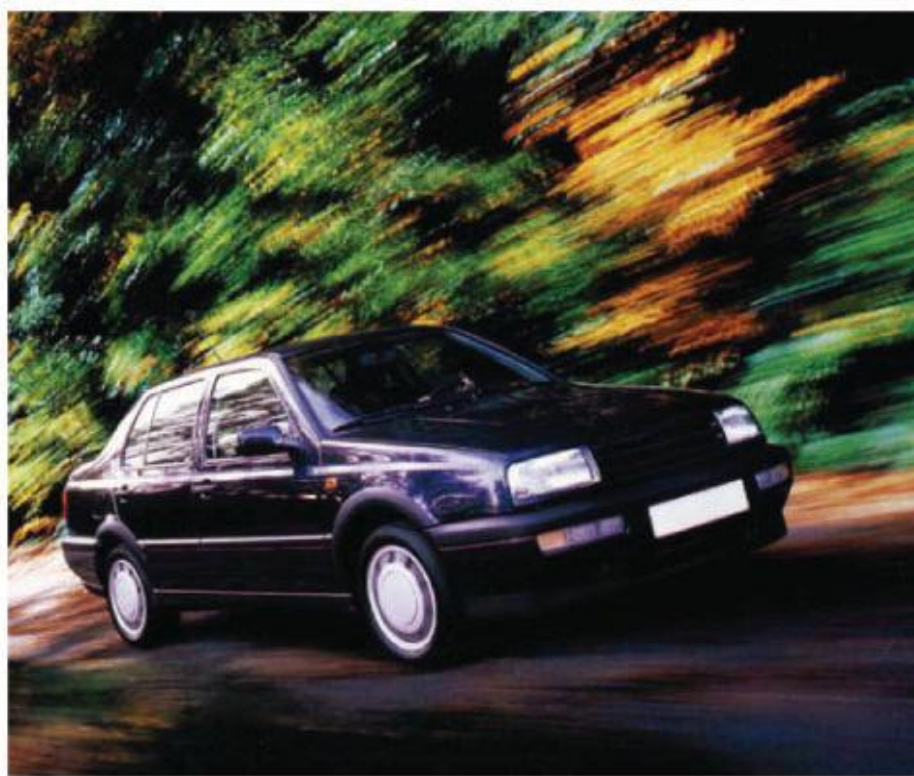
织作
Hand Tufted



汽车地毯 Car Mats

山花为了满足汽车工业飞速发展的需要，投巨资从美国、日本等国家引进具有国际先进水平的地毯设备，开发生产出具有时代特色的汽车地毯。年生产能力80万套。山花汽车地毯图案时代感强，具有耐磨、隔音、隔潮、防寒保温、减震、环保优良性能，可为各类车型完美配套，深受汽车制造商和广大消费者的喜爱。

In order to meet the rapidly changing design requirements of the car industry, Shanhua imported internationally advanced car carpet tufting machines and can produce 800,000 sets of car mats annually. Shanhua mats feature durability, sound proofing, moisture resistance, insulation, shock absorption, environment protection. Shanhua mats can elegantly decorate all makes and models of cars to the benefit of car manufacturers and customers.

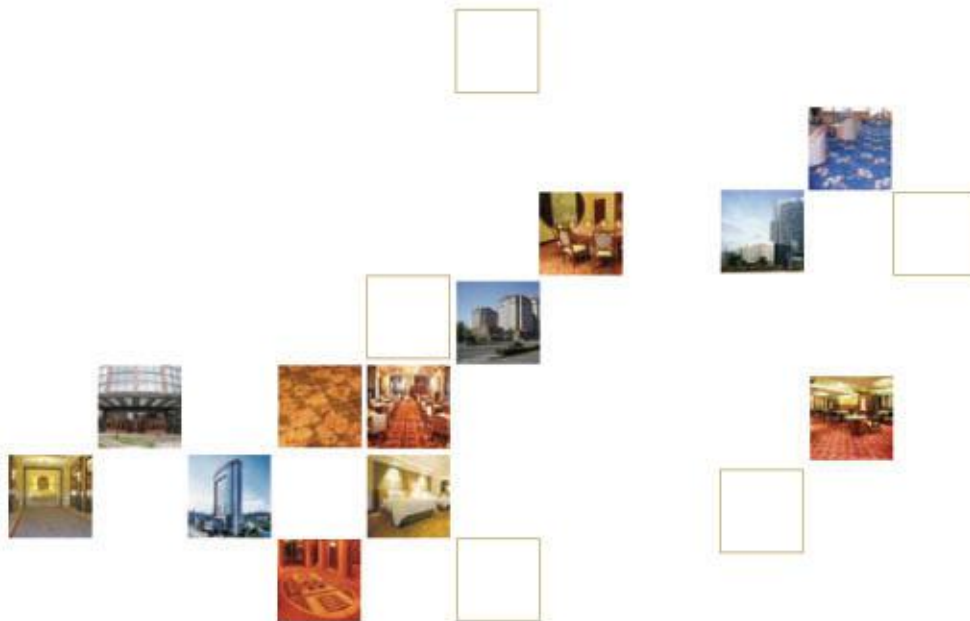


客户的信赖源自：

- 国际品质
- 环保认证
- 精彩设计
- 专业服务

Shanhua clients can rely on:

- High product quality
- Environmentally friendly certification
- Elegant design
- Quality service





国际品质赢得 全球客户的无限信赖

High product quality
generates the full confidence
of clients.

山花作为国际认可的制造商，在选材上极其严格。新西兰羊毛、英国羊毛、英威达和首诺尼龙等优良特性，融合企业之高新技术和科学管理，创造了山花地毯的多点认知特性和国际领先的品质，赢得全球客户的无限信赖。

As an internationally certified quality carpet manufacturer, Shanhua selects the finest raw materials such as New Zealand and British wool and nylon made by Invista and Solutia. Combining state-of-the-art technology and effective quality control systems, Shanhua assures its customers of high quality standards and outstanding performance of its products.



昆明绿洲大酒店 五星级
Kunming Greenland Hotel Five-star Level



**国际品质
赢得全球客户的无限信赖**

High product quality generates the full confidence of clients.



山花地毯具有防虫蛀、抗静电、阻燃、防污防尘、色牢度高、耐磨等特性，尤以其极佳的防污防尘性、羊毛地毯之防虫性、尼龙地毯之永久抗静电性为众多要求严格的客户提供了更耐久、可靠的产品。

Shanhua carpets are moth-proof, static-proof, anti-stain, fire retardant, colorfast and highly durable. These features ensure a reliable and outstanding performance of Shanhua carpets to meet demanding requirements of customers.



ISO9001:2000质量管理体系认证
ISO9001:2000 Quality System Certificate

GB/T28001:2001职业健康安全管理体系认证
GB/T28001:2001 Occupational Health and Safety System Certificate



欧盟CE认证
EU CE Certification



采用国际标准产品标志
Adopting International
Standard Product Marking
Certificate



挪威船级社认证
Norway Classification
Society Certificate



中国船级社认证
China Classification Society
Certificate



意大利船级社认证
Italy Classification Society
Certificate



中国民用航空地毯认证
China Civil Aviation
Carpet Certificate



新西兰羊毛局认证
The New Zealand Wool
Bureau Certificate



英国羊毛协会认证
The British Wool Certificate



英威达尼龙地毯认证
The INVISTA Nylon Carpet
Certificate



3M防污处理认证
3M Dirty-proof Processing
Certificate



英国SATRA防火检测认证
British SATRA Fire Detection Certification



环保地毯 为您打造绿色健康空间

Environmentally friendly carpet is made with
your health in mind.



美国CRI+PLUS室内空气质量认证
The Carpet and Rug Institute Green
Label Carpet Certificate



ISO14001 : 2004环保体系认证
ISO14001:2004 Environment
System Certificate



中国环保地毯认证
China Environment-friendly
Carpet Certificate



国际高级环保认证
Advanced Int'l Carpet Alliance
for Environmental Stewardship



东莞会展国际大酒店 五星级
Dongguan Exhibition International Hotel Five-star Level

TVOC有害气体释放量数据

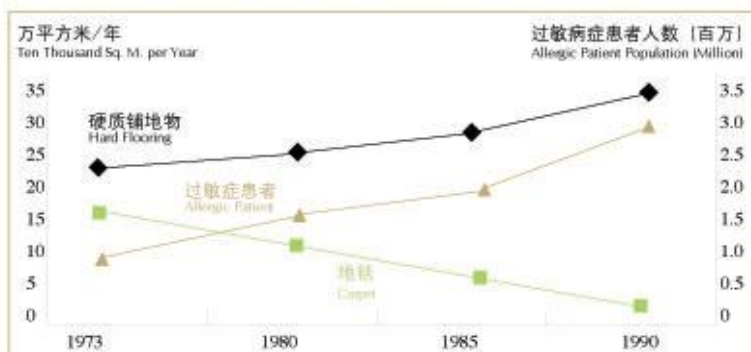
TVOC释放量	产品
可引起中毒的释放量 $> 25.0\text{mg}/\text{m}^3$	乙烯片 $> 500\text{mg}/\text{m}^3$ 墙、地面胶粘剂 $> 200\text{mg}/\text{m}^3$ 溶解性涂料 $> 100\text{mg}/\text{m}^3$ 地板腊层 $\leq 80\text{mg}/\text{m}^3$ 家具喷漆 $\leq 27\text{mg}/\text{m}^3$
使人感到不舒服的释放量 $3.0-25\text{mg}/\text{m}^3$	硅酮 $\leq 13\text{mg}/\text{m}^3$ 乙烯地板 $\leq 12\text{mg}/\text{m}^3$ 三合板 $\leq 9\text{mg}/\text{m}^3$
可使人感到不舒服的释放量 $0.2-3.0\text{mg}/\text{m}^3$	清漆地板 $\leq 1.0-5.0\text{mg}/\text{m}^3$ 家具制造作坊 $\leq 0.4\text{mg}/\text{m}^3$
不会使人感到不舒服的释放量 $< 0.2\text{mg}/\text{m}^3$	地毯 $< 0.2\text{mg}/\text{m}^3$

资料来源：美国权威实验室



山东大厦 五星级
Shandong Hotel Five-star Level

过敏病症发生与铺地材料铺设的相互关系 (从1973年至1990年) The Relationship between Allergy and Flooring From Year 1973 to Year 1990



资料来源：瑞典
Origin: Sweden

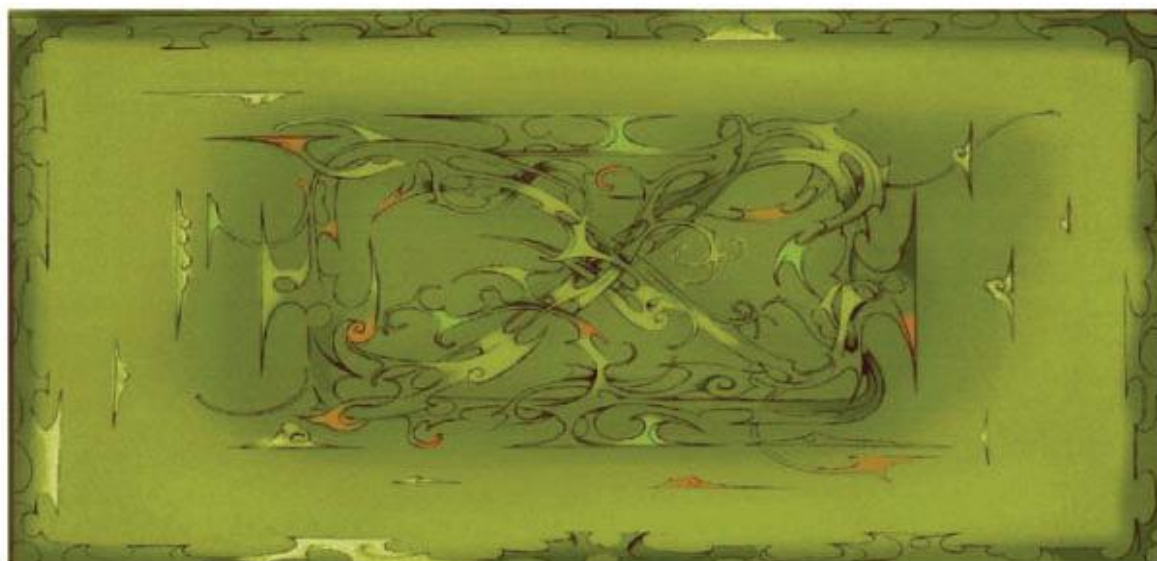
基于不准确的数据，人们原以为地毯的使用会引起过敏症。瑞典政府于1973年开始禁止在公共场合使用地毯。经过近20年的跟踪调查，虽然地毯的使用量下降，过敏症患者数量反而剧增。事实证明过敏症发病率的上升与地毯的使用无关。瑞典政府终于在1990年撤销了禁止在公共场合使用地毯的政府令。

Based on inaccurate data, people used to think that using carpet would cause allergy. The Swedish Government had forbidden using carpet in public areas since 1973. After 20 years following investigation, though the total volume of the carpet usage dropped, the amount of allergic patient increased significantly. The fact proves that the occurrence of the allergy is not related to the usage of the carpet. The Swedish Government finally withdrew the order of forbidding using the carpet in public areas.



精彩设计 全心全意为客户服务

Elegant design Specific designs can be created for each client and followed up with the appropriate documentation, delegation and installation services.



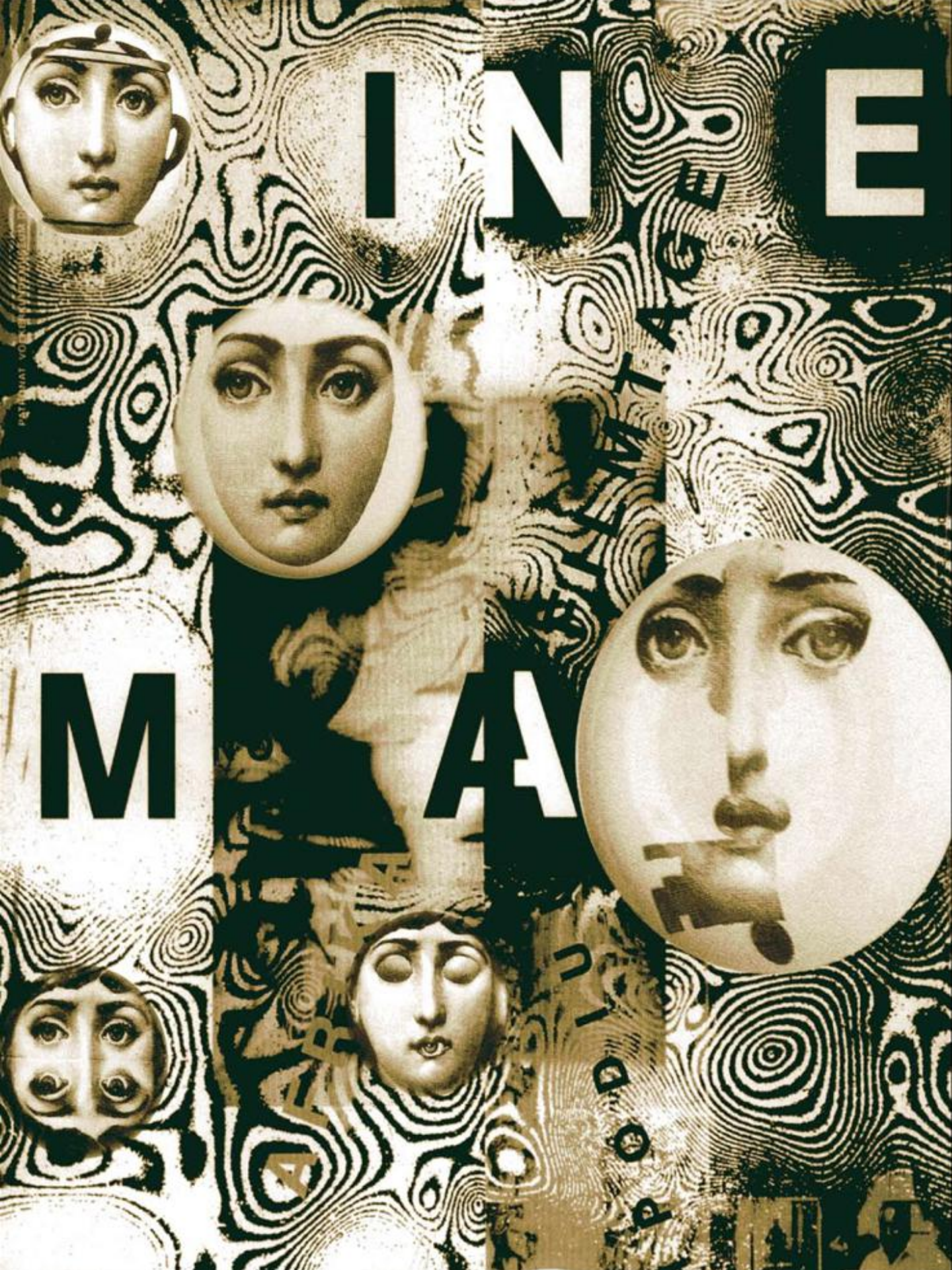
美国肯尼迪艺术中心“鸟屋”地毯
The Carpet of Kennedy Art Center

美国肯尼迪艺术中心和众多五星级酒店的选择，是对山花中西合璧优秀设计方案的充分肯定。

Competitively winning internationally important contracts to supply the Kennedy Art Center and many Five-star hotels is an endorsement of Shanhua's successful blending of the best concepts in oriental and western design.



产品设计开发中心
R&D Department



MIND IN THE

M

A

MACHINERY



好的服务
不是一次性的！

Quality Service is consistent.

山花拥有完善、高效的销售体系，从地毯设计、铺装及维护保养，为客户提供国际标准的服务。

Shanhua offers its customers a comprehensive range of services including designing, implementing and maintaining training programs for carpet maintenance.



广州香格里拉大酒店 五星级
Shangri-La Hotel, Guangzhou Five-star Level

总部	HEADQUATERS
中国山东威海	WEIHAI, SHANDONG

海外市场	OVERSEAS MARKET
------	-----------------

澳大利亚	AUSTRALIA
美国	U.S.A
日本	JAPAN
韩国	KOREA
印度	INDIA
新加坡	SINGAPORE
英国	U.K.
菲律宾	PHILIPPINES
马来西亚	MALAYSIA
新西兰	NEW ZEALAND
加拿大	CANADA
阿曼	OMAN
斯里兰卡	SRI LANKA
阿联酋	UNITED ARAB EMIRATES
沙特	SAUDI ARABIA
尼泊尔	NEPAL
土耳其	TURKEY
以色列	ISRAEL
科威特	KOWEIT
越南	VIETNAM
孟加拉	BENGAL
香港	HONGKONG
台湾	TAIWAN
澳门	MACAO

国内销售机构	BRANCHES
--------	----------

北京	BEIJING
上海	SHANGHAI
广州	GUANGZHOU
长春	CHANGCHUN
沈阳	SHENYANG
天津	TIANJIN
济南	JINAN
青岛	QINGDAO
郑州	ZHENGZHOU
西安	XI'AN
成都	CHENGDU
武汉	WUHAN
南京	NANJING
杭州	HANGZHOU
昆明	KUNMING
福州	FUZHOU
深圳	SHENZHEN
兰州	LANZHOU
大连	DALIAN
太原	TAIYUAN
长沙	CHANGSHA
南昌	NANCHANG
重庆	CHONGQING
拉萨	LASA



产品设计开发中心
R&D Department



销售中心
Sales Center



装运出口
Export

Official Distributor in Laos:

tri
continental
Hotel & Restaurant Supplies

Head Office:
Khamngoi Village,
Xaysetha District, Vientiane Lao PDR
Tel: +856 21 254400, 020 52825080
E-mail: sales@tricontinental.asia, www.tricontinental.asia

Luang Prabang Office:
Koily Village,
Luang Prabang Lao PDR
Tel: +856 20 55176964, 020 55414668
E-mail: sales.l@tricontinental.asia